

BUILDING A FUTURE TOGETHER

Here are just a few examples of how we have worked with landowners to deliver quality residential developments



ROSEBERRY

Stillington, near York

Roseberry is a development of 18 stylish semi-detached and detached houses in the picturesque North Yorkshire village of Stillington. Each home combines contemporary interiors with traditional external design in keeping with the surroundings.

We liaised closely with the local authority and parish council to achieve the necessary planning permission on this previously agricultural land. We handled the entire process - including a thorough public consultation with local residents to ensure a smooth process for the landowner and that local viewpoints were encompassed as part of the plans.



THE CHASE

Bishopthorpe, York

Nowhere is Daniel Gath Homes' unique approach more evident than at this exclusive development of four prestigious properties on a former brownfield site in York.

Situated in a high profile conservation area, this site is one of the key focal points for the city and required our full expertise to navigate a protracted and complex planning process. We were delighted when our hard work and effort was rewarded at the York design awards for the development of the year 2015.



DANIELGATHHOMES



BRINGING YOUR ASPIRATIONS TO LIFE

DANIELGATHHOMES

For further details call **01904 479778** or visit **danielgathhomes.co.uk**

Daniel Gath Homes Limited, 1st Floor, 5 Audax Court, Audax Road, Clifton Moor, York, YO30 4RB
Email: **info@danielgathhomes.co.uk**

REALISE THE POTENTIAL IN YOUR LAND

We all know that land is a valuable asset. As Mark Twain famously wrote: "Buy land, they're not making it anymore."

But realising the commercial potential of your land can be a challenge. Many landowners are deterred by the prospect of hefty bills and swathes of red tape to wade through. With an average planning application costing between £30,000 and £40,000, the thought of this expense - while spending hours with planners, consultants, local authorities and architects - is understandably a major obstacle. What's more, there is no guarantee that by the end of the process you will have anything to show for your time and expense.

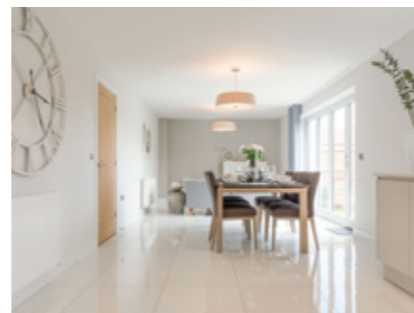
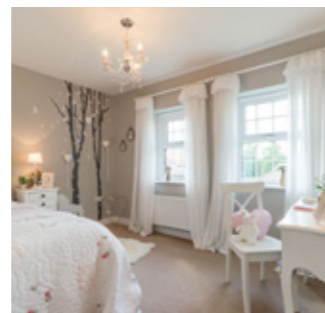
RISK-FREE ALTERNATIVE

At Daniel Gath Homes we have 20 years' experience of navigating the planning process, enabling us to deliver maximum returns for you, the landowner.

We offer you a risk-free alternative by handling the entire process on your behalf.

Should you decide to proceed with our offer, we will endeavour to submit a planning application within three months. We will provide you with regular feedback and updates throughout the process, keeping you fully in the picture at all times.

We pay all of the upfront expenses, from surveyors, consultants and architects through to the council's application fee. And whatever the outcome, you will not be asked to pay a penny.



DANIEL GATH HOMES WORKING WITH YOU

Our ethos has always been to focus on building quality homes on select developments in highly regarded towns and villages.

Formed in 1997, Daniel Gath Homes is an independent York-based builder. Our name is synonymous with high quality residential developments throughout North Yorkshire.

With founder Daniel Gath at the helm, we have a small team of friendly experts who will guide you step by step through the planning process. We are actively looking for development land in the region, with or without planning permission, on either greenfield or brownfield sites. We specialise in difficult sites and will consider all land, including where planning permission has previously been refused.

"Not only do we apply high standards to building a home, we also apply them to building relationships with our clients and business partners. Our attention to detail and in-depth knowledge of the local planning system can help you maximise the return on your land and contribute towards providing much needed new homes."

D. Gath

Daniel Gath
Managing Director - Daniel Gath Homes

For more information, or an informal chat about your land, please contact **Daniel Gath** on **01904 479778** or email **daniel.gath@danielgathhomes.co.uk**